

# Cleveland Multimodal

## Technical Feasibility, Site Analysis and Area Development Plan





# Presentation

*Freddy L. Collier, Jr.*

*Director, Cleveland Planning Commission*

## 1. Introduction

## 2. Project Conception

*Nancy Lyon-Stadler, PE, PTOE*

*WSP/Parsons Brinckerhoff*

## 3. Project Development

*Jennifer LeMasters Wirtz, AIA, LEED AP*

*WSP/Parsons Brinckerhoff*

## 4. Final Concept

*Freddy L. Collier, Jr.*

*Director, Cleveland Planning Commission*

## 5. Next Steps



# Project Team

## Project Management Team

*Cleveland Planning Commission*

## Consultant Team

*WSP | Parsons Brinckerhoff*

*AECOM*

*Peter Lawson Jones*

## Technical Advisory Committee

*Amtrak*

*Bike Cleveland*

*City of Cleveland*

*Cleveland City Council*

*Cuyahoga County*

*Destination Cleveland*

*Downtown Cleveland Alliance*

*GCRTA*

*Greyhound*

*Group Plan*

*NOACA*

*ODOT*

*Port of Cleveland*





# Project Conception

## 1. Develop conceptual plan for a multi-modal transportation facility

- Amtrak
- Greyhound
- RTA Services (Waterfront Line, Downtown Trolleys, Regional Express Buses)
- Regional transit buses (RTA, Akron Metro, Laketrans, others)
- Other transportation services (shuttle buses, taxis, rental cars, bike share, etc.)
- Associated services and amenities
- Potential joint development opportunities (secondary site)

## 2. Preferred location

- West of E. 9th Street

## 3. Develop conceptual plan for the station and the site

- Draft concepts
  - Grand Hall
  - Promenade
- Final concept





# Project Goals

The plan goals include and support the following elements:

- Convenient connections
- Modal choice and accessibility
- Transit-Oriented Development
- Mixed-use development
- Vibrant place for commerce
- Iconic, memorable and vibrant place
- Attractive, contextual, sense of place
- Safe
- Cost effective
- Public health



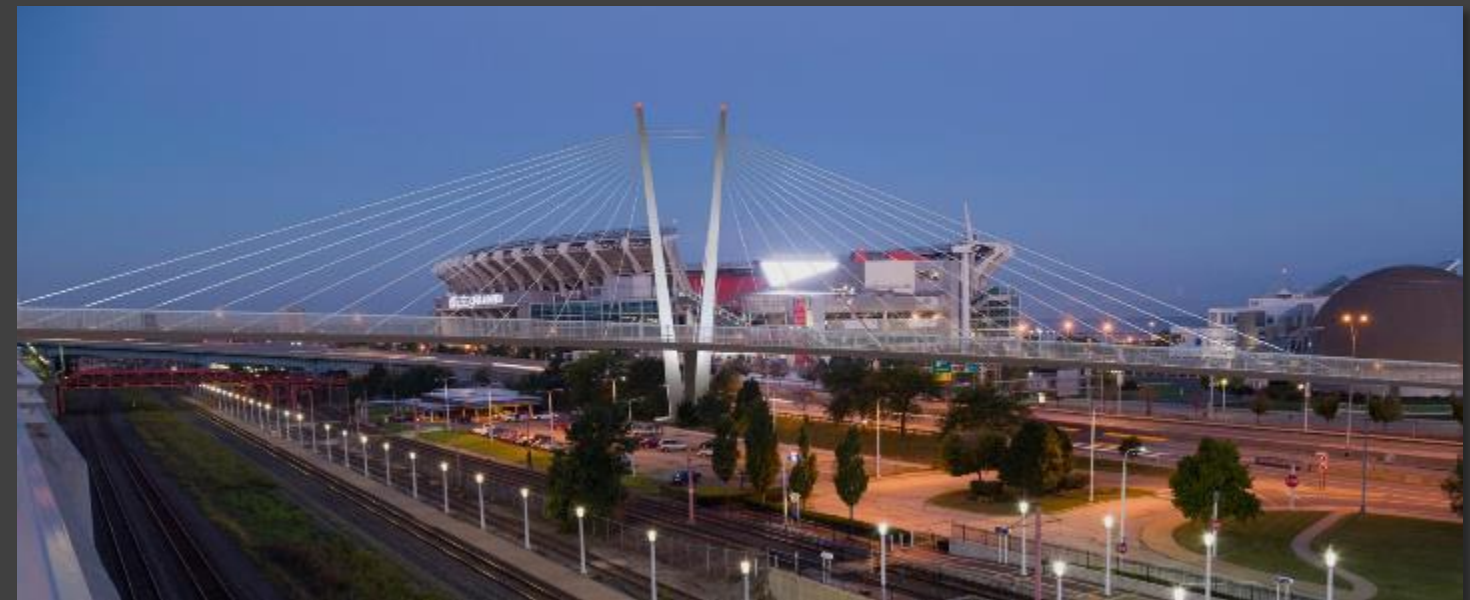
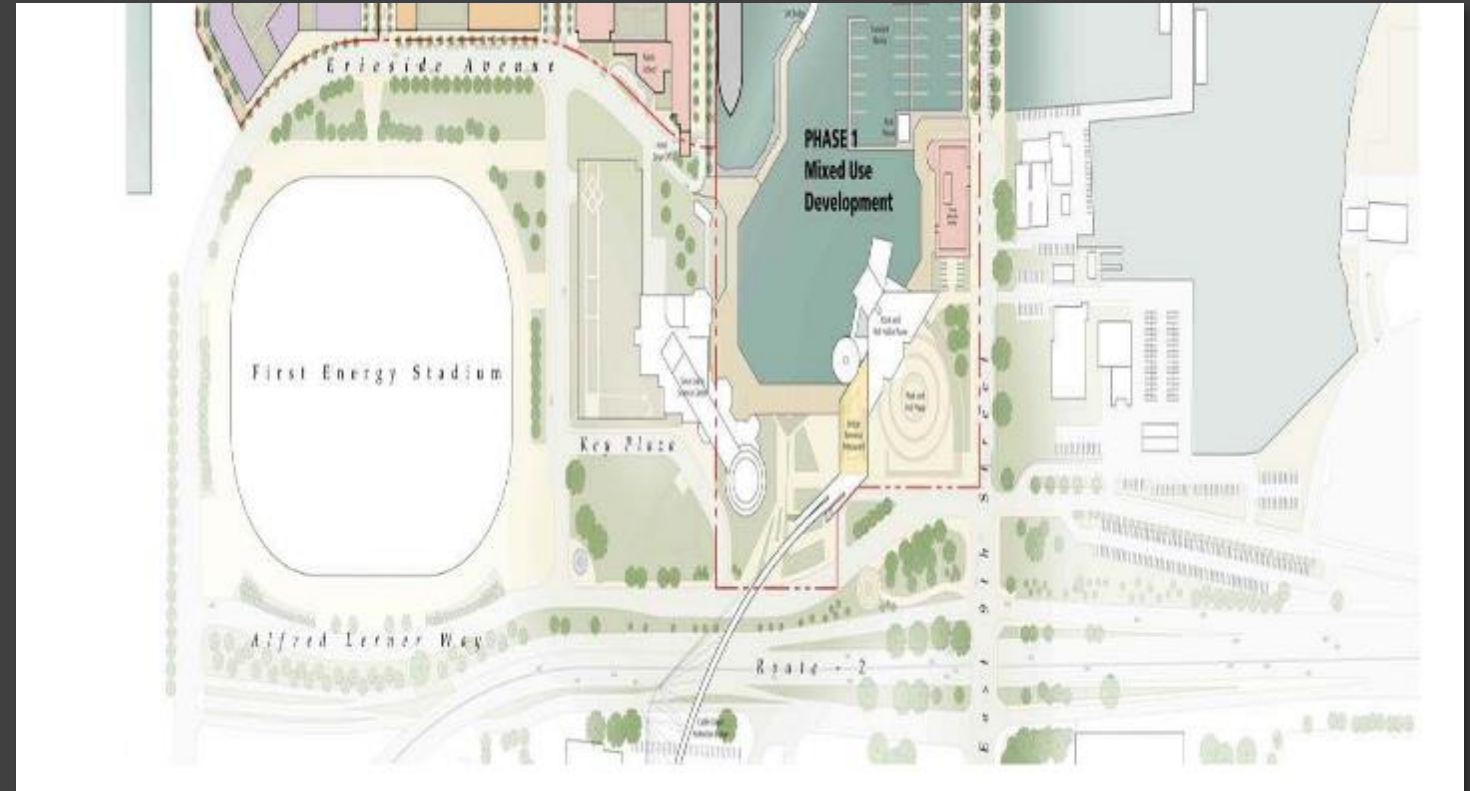
# Study Area





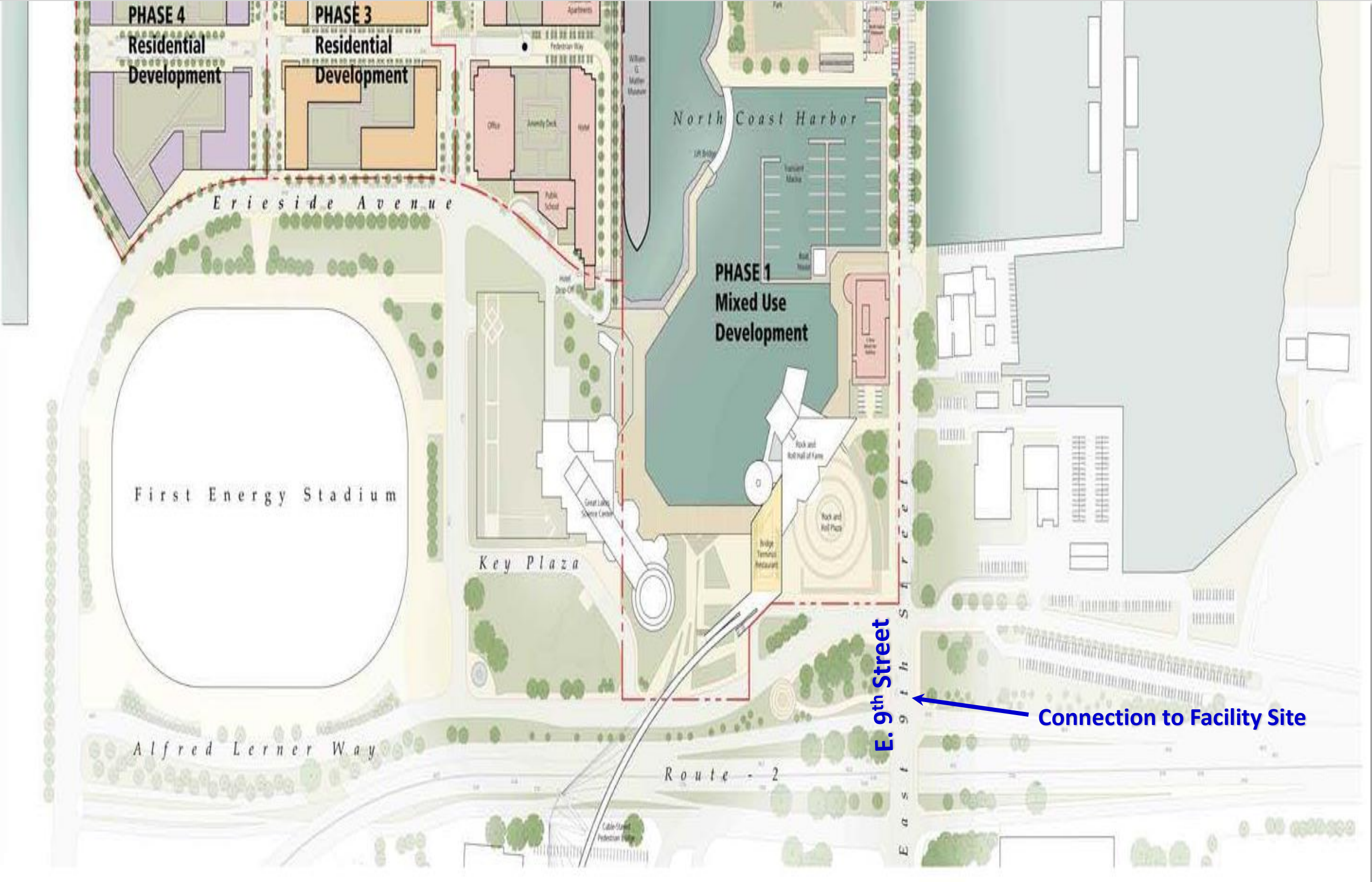
# Existing Conditions

- Lakefront Development Plan
- Lakefront Pedestrian Bridge
- Initial Muni Lot Concept
- Traffic Operations & Site Access



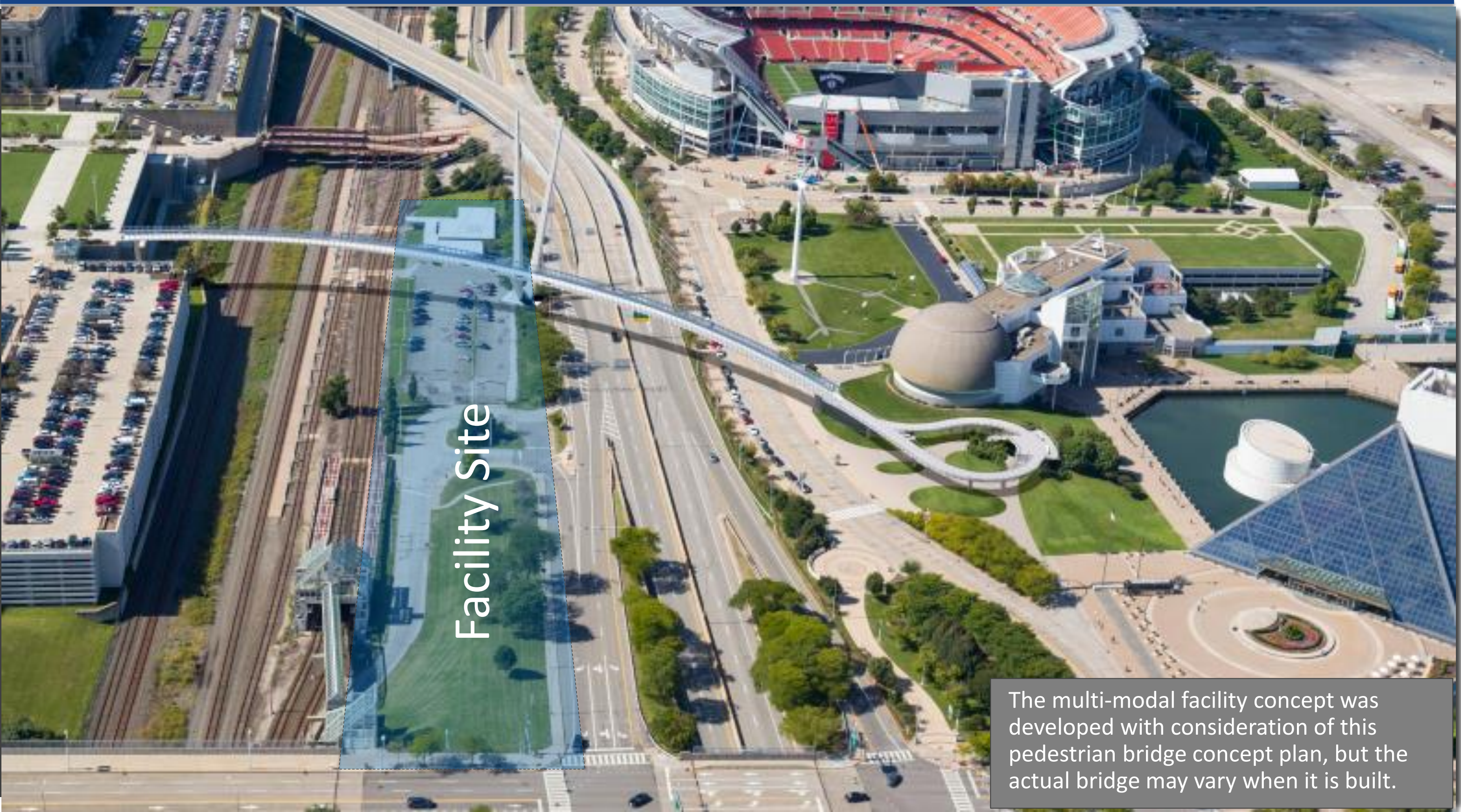


# Lakefront Development Plan (2015)





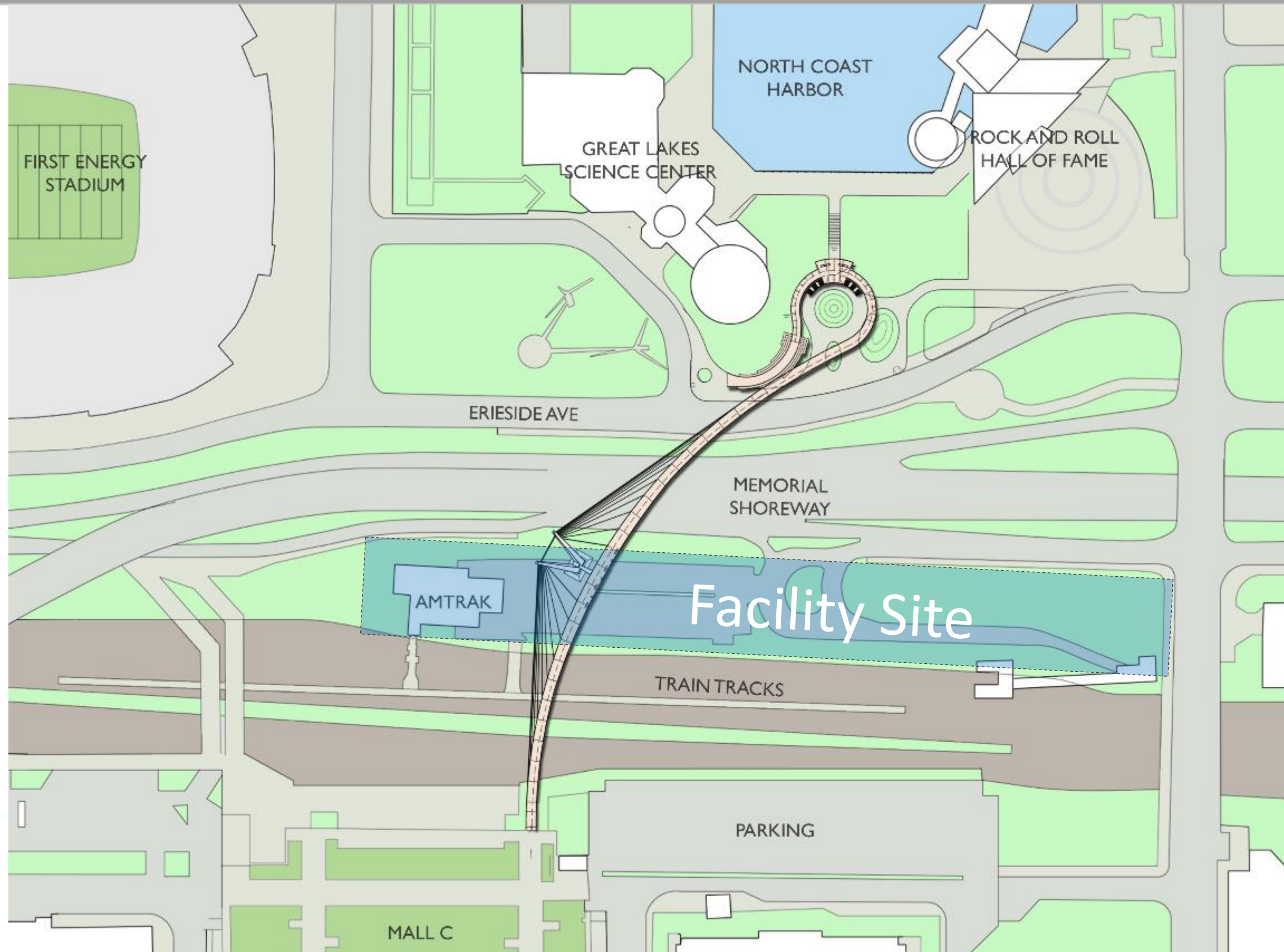
# Lakefront Pedestrian Bridge (2015)



The multi-modal facility concept was developed with consideration of this pedestrian bridge concept plan, but the actual bridge may vary when it is built.

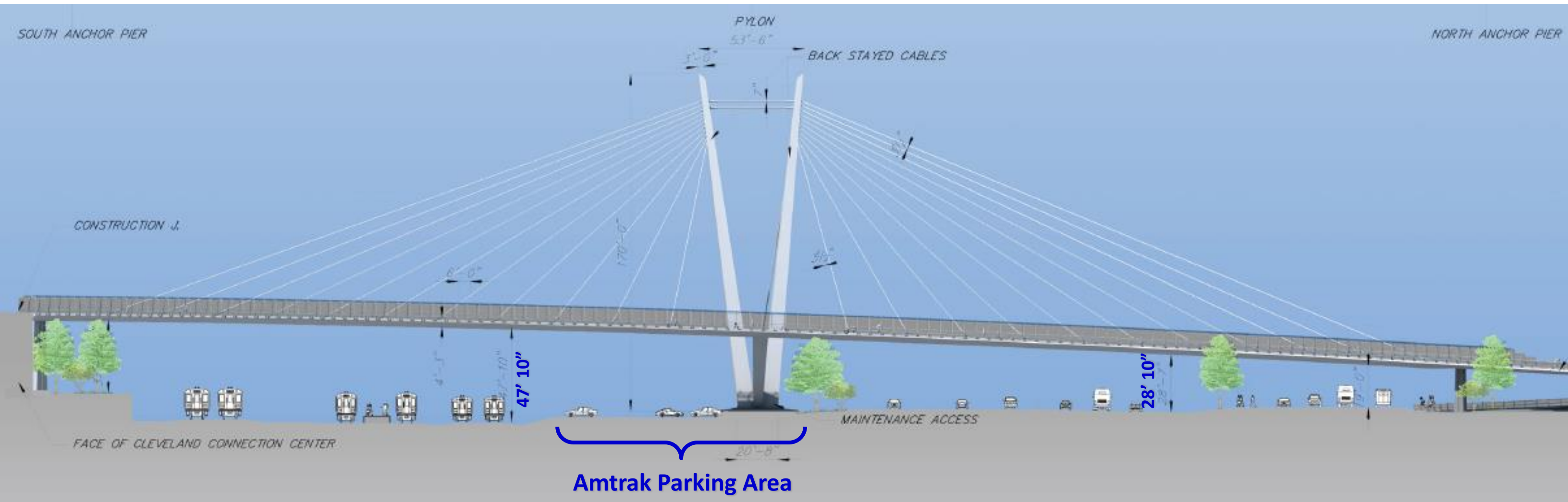


# Pedestrian Bridge



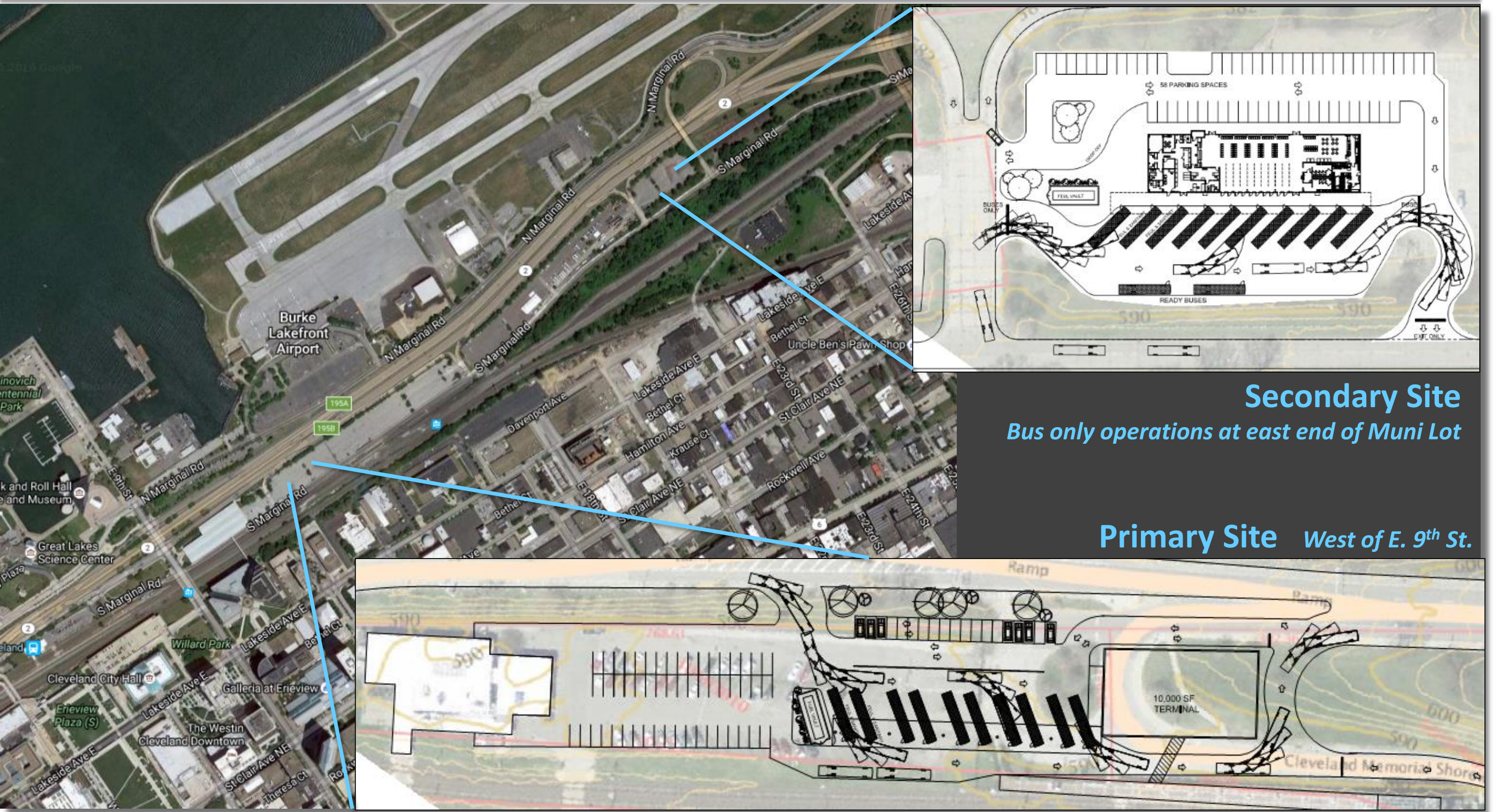


# Pedestrian Bridge



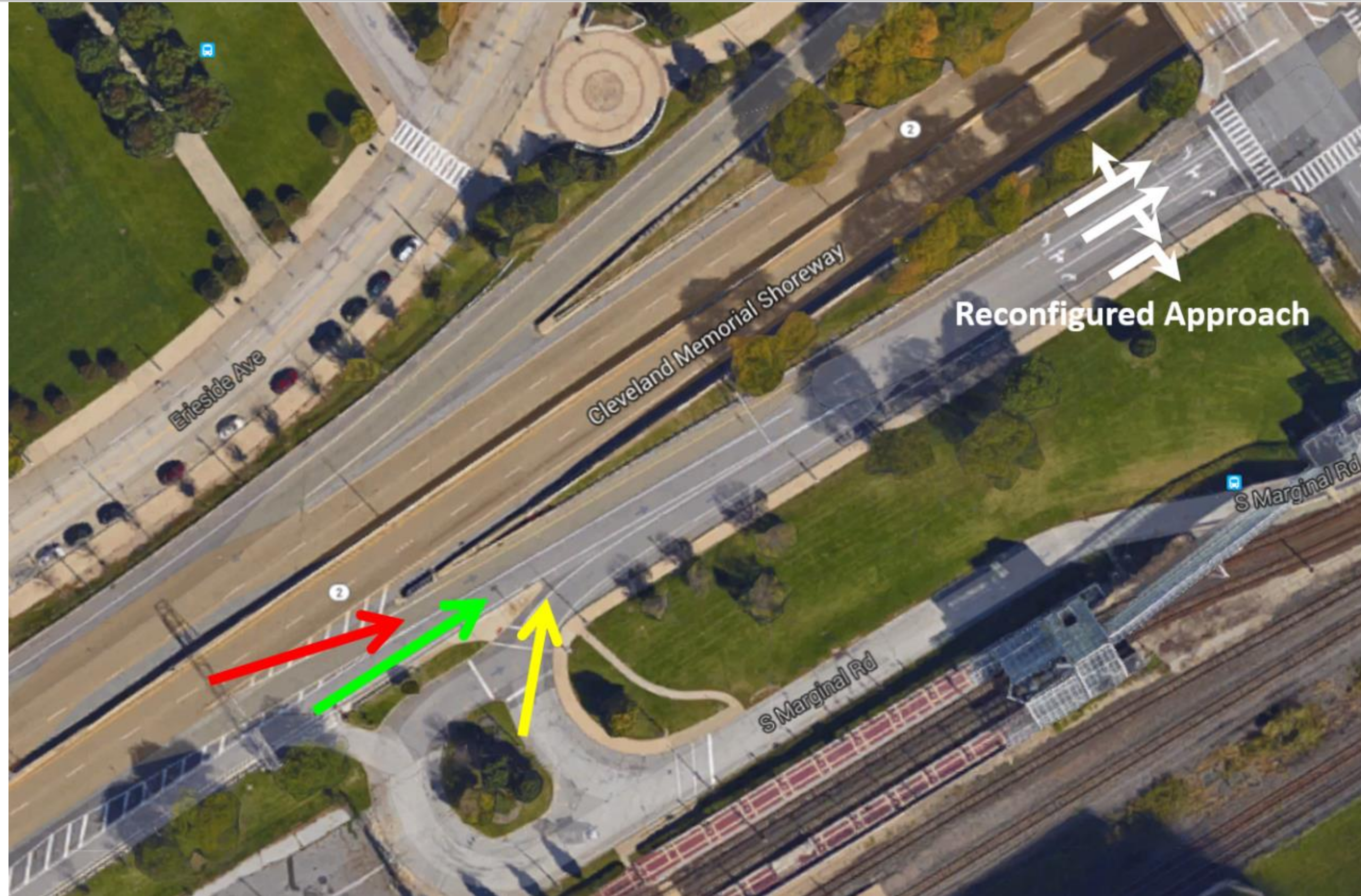


# Initial Muni Lot Concept (2014)





# Traffic Operations and Site Access





# Greyhound Operations & Considerations

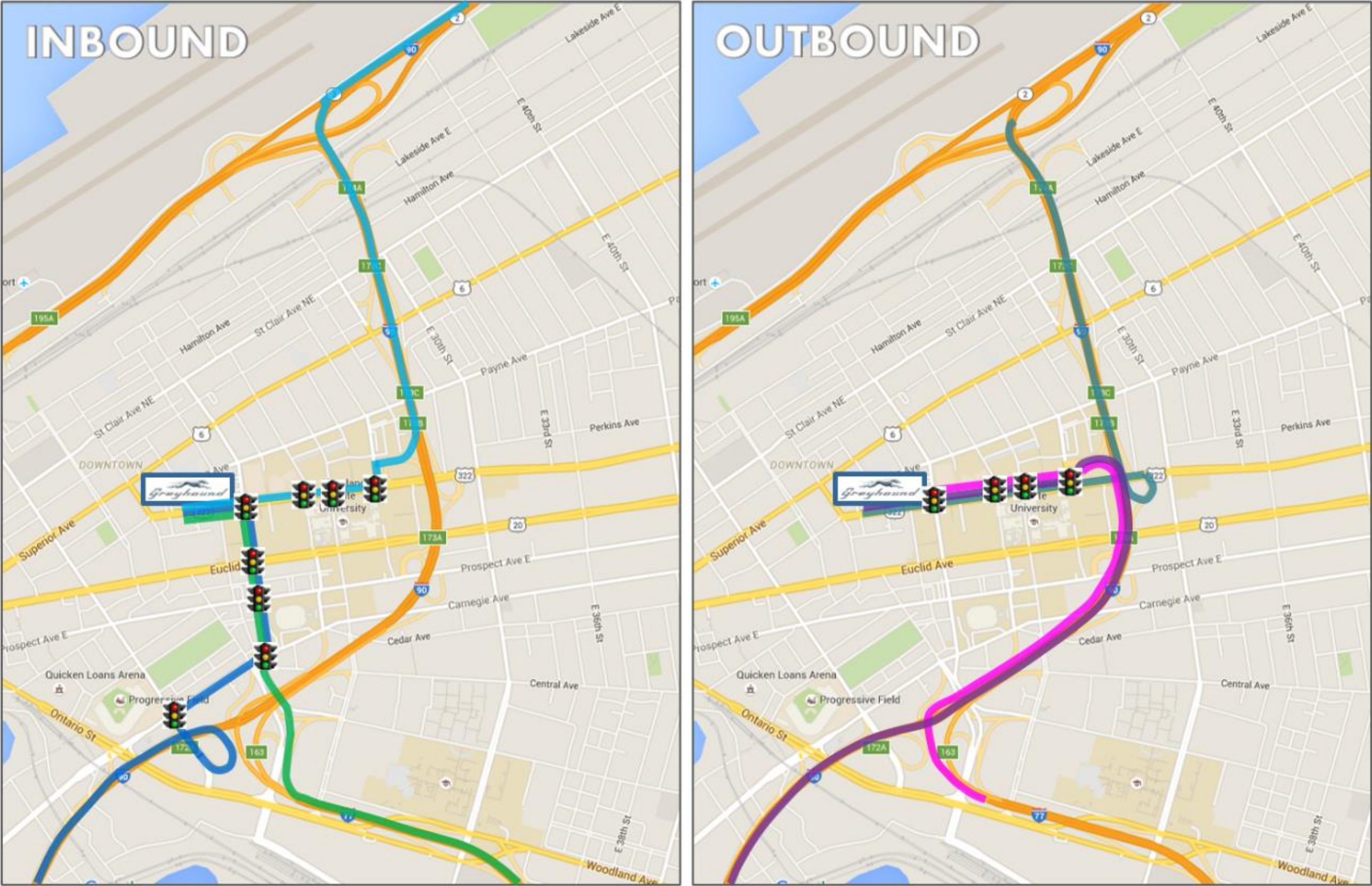
Site visit Wednesday, February 3, 2016

- Saw-tooth bus bays configuration (45 degree)
- Single-level operations
  - Personnel co-located with main operations
  - Drivers with buses for load counts & paperwork
  - Impact on operating costs
- Initial bay designated for refueling
- Staffing and program needs
  - 12,000 SF Facility
  - 30,000 SF Site
- Bus circulation
  - Bus staging
  - Bus access
  - Bus security
- Bus boarding & queuing
- Rider amenities in close proximity
- Capital funding program
  - Parent company in United Kingdom



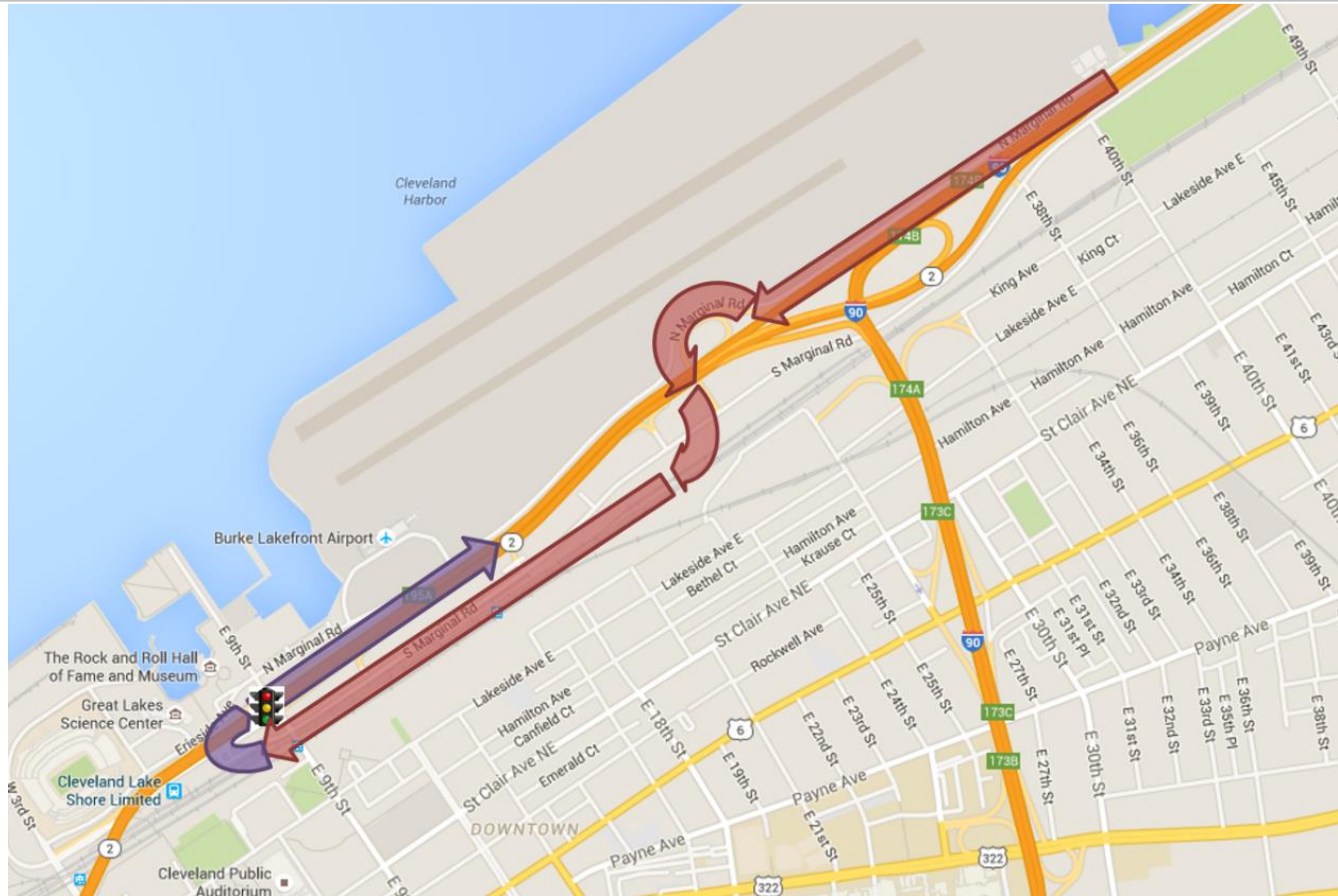


# Current Greyhound Access



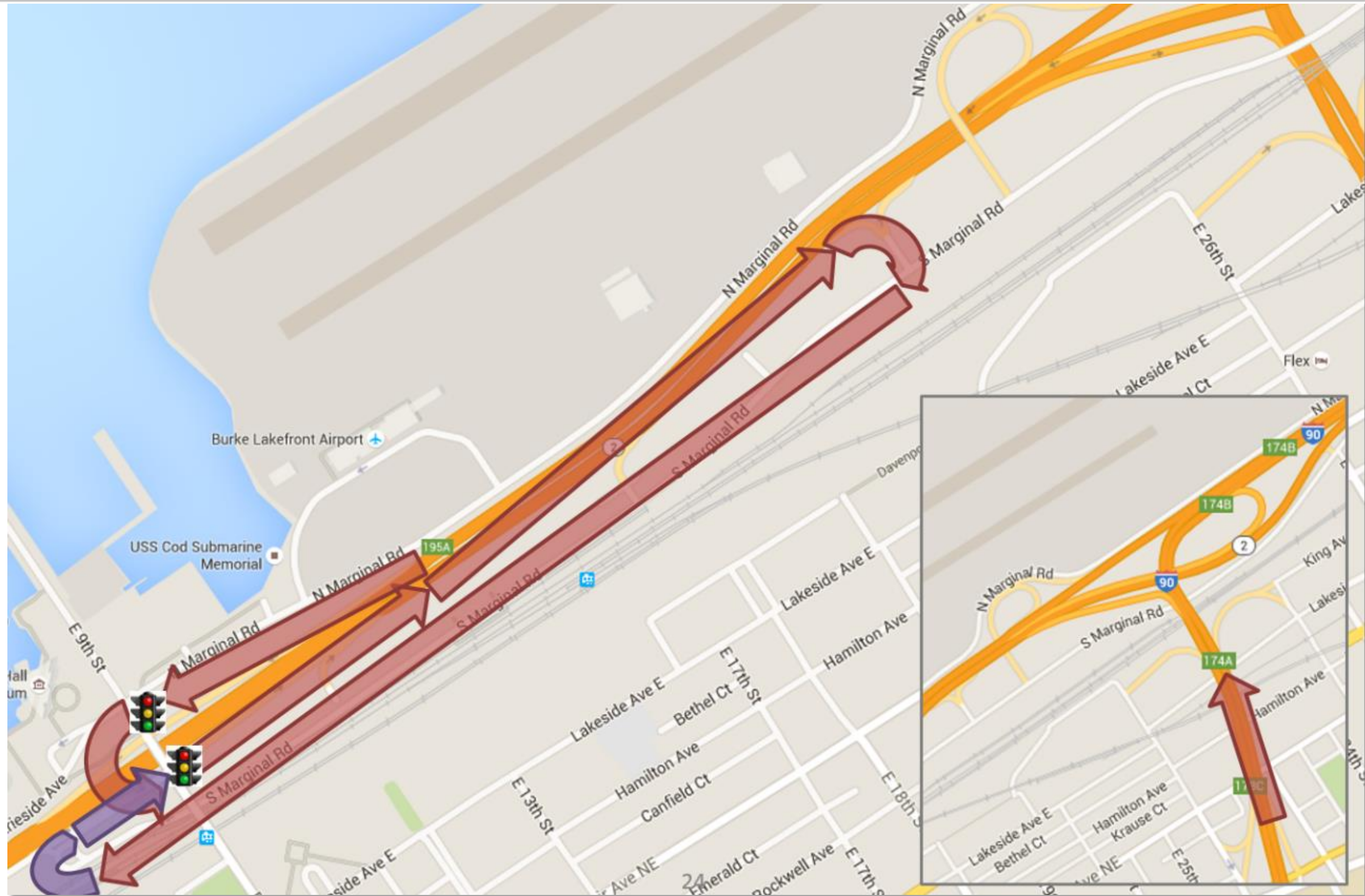


# Proposed Bus Access to/from East





# Proposed Bus Access to/from South & West





# RTA Operations & Considerations

Site visit Monday, September 21, 2015

- **North Coast Harbor Station**
  - Waterfront Line
  - Built 1996
- Pedestrian access via E.9<sup>th</sup> Street
- Entrance facility
  - Elevator/stairs to bridge
  - ± 350 SF
- Enclosed bridge
  - Temperature & ventilation
- Head house
  - Maintain vertical circulation to rail platform





# Amtrak Operations & Considerations

Site visit Tuesday, December 29, 2015

*Westbound Lake Shore 49 to Chicago*

*Eastbound Lake Shore 48 to New York*

- **Retain platform access**
  - Operational requirements
  - Railroad coordination
- **Interior space functions well**
  - Passenger areas
  - Back of house
  - Staffing
- **Additional Observations**
  - Outdoor queuing and passenger waiting environment
  - Mix of baggage / passenger flow
  - Single point boarding
  - Platform width
  - Signage and wayfinding
  - Exterior lighting
  - Smoking areas
  - Vehicle parking & queueing





# Concept Development





# Inspiration | Great Halls



^Grand Central Station,  
New York, NY [Google Images]

> Miami Central Station,  
Miami, FL [Google Images]

> Grand Central Birmingham,  
Birmingham, AL [Google Images]





# Inspiration | Great Lakes Exposition, 1936-37





# Inspiration | Great Lakes Exposition, 1936-37



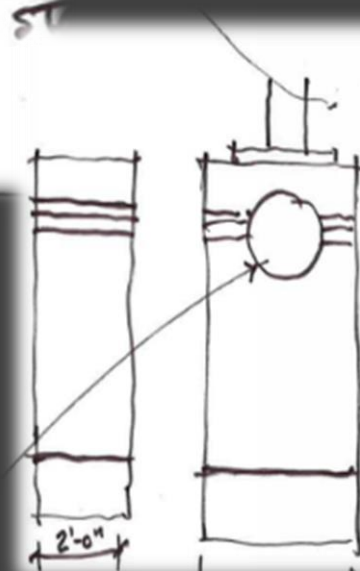
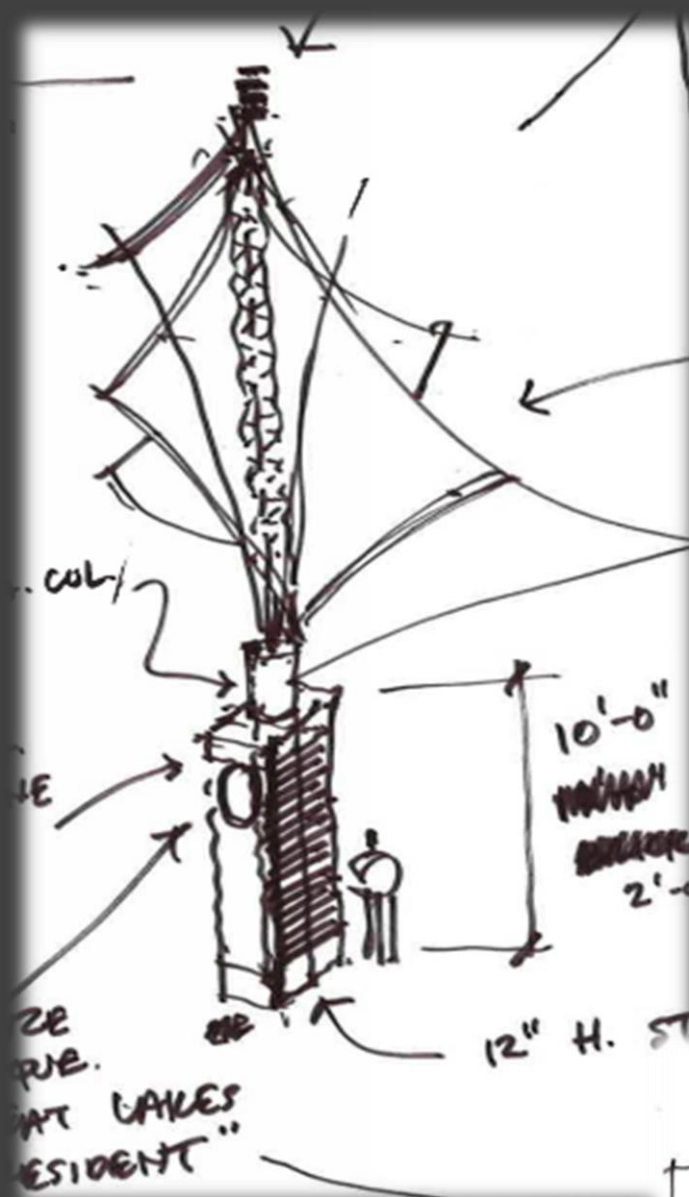


# Inspiration | “Court of Presidents”



A nod to the “Court of Presidents” in our “Transit Court”.

- Stone pilasters with a bronze plaque for each of eight “Ohio Presidents”.
- Metal mesh fabric sails, LED illuminated.





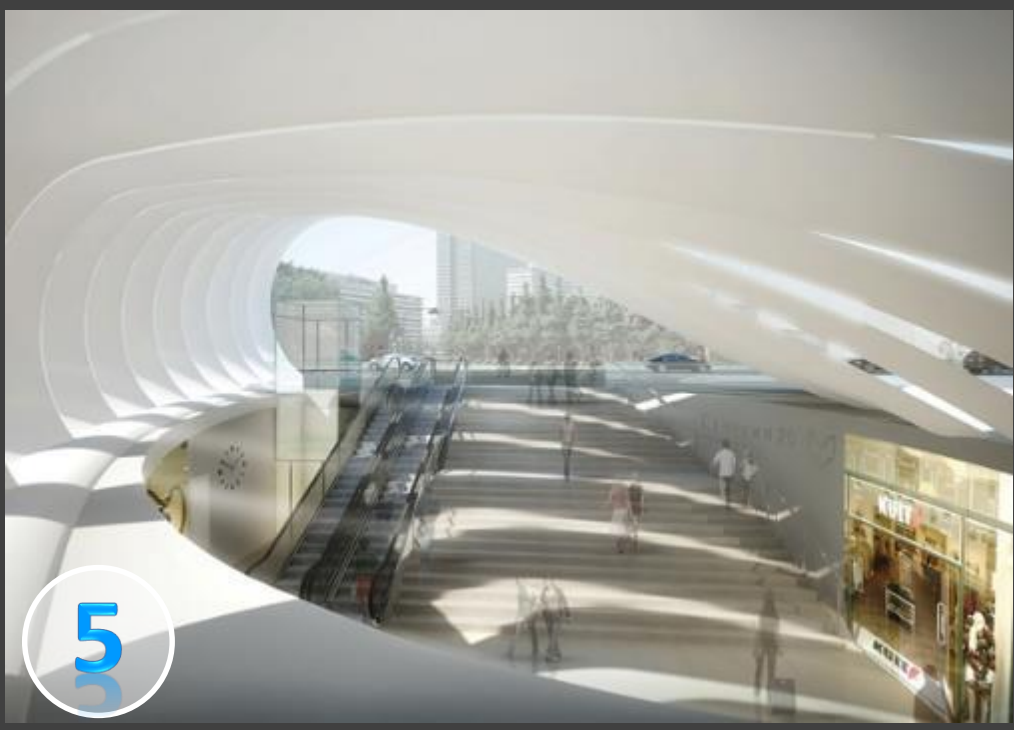
# Inspiration | Canopy Styling



Transportation forms of the mid-30's.

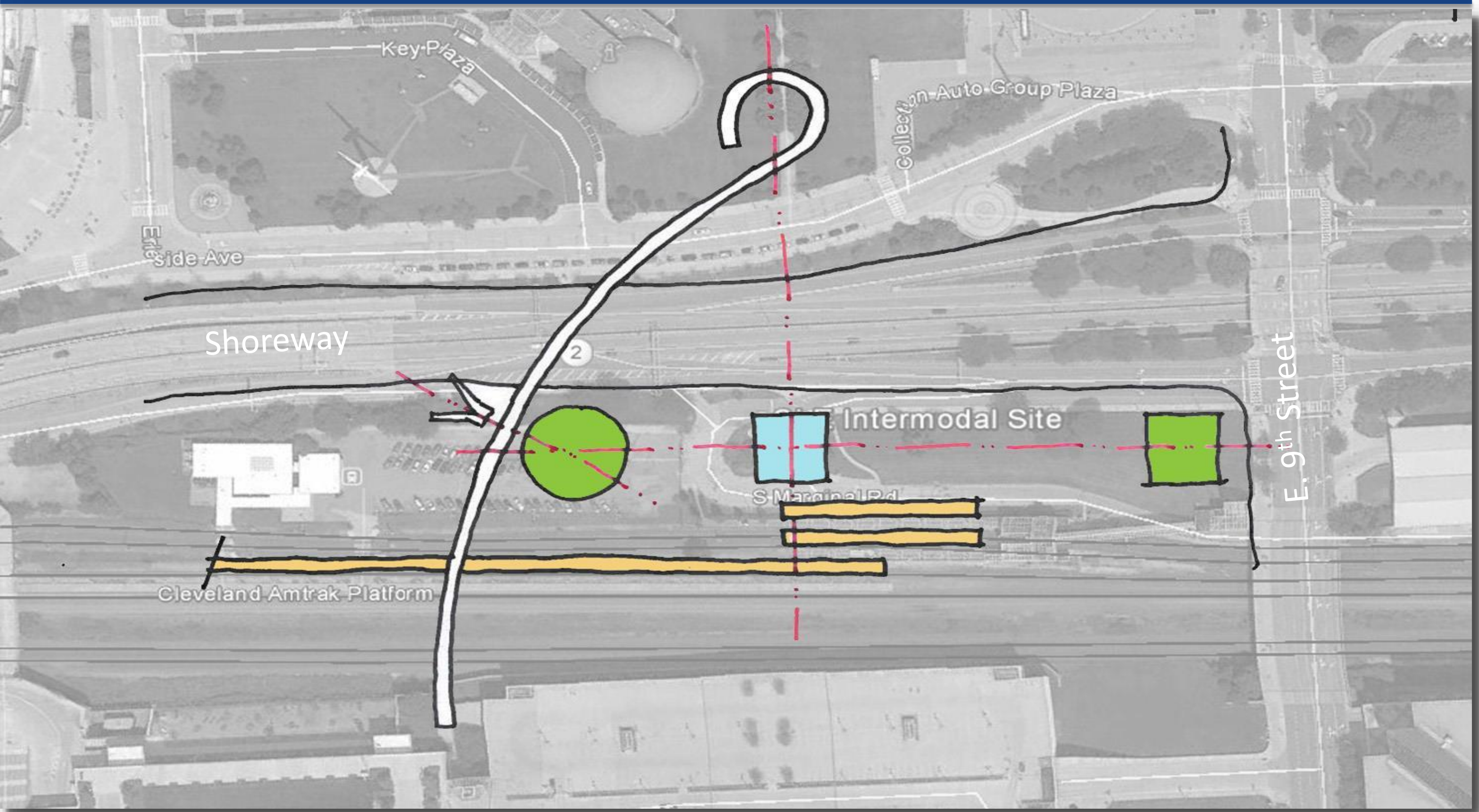


# Inspiration | Canopy Styling



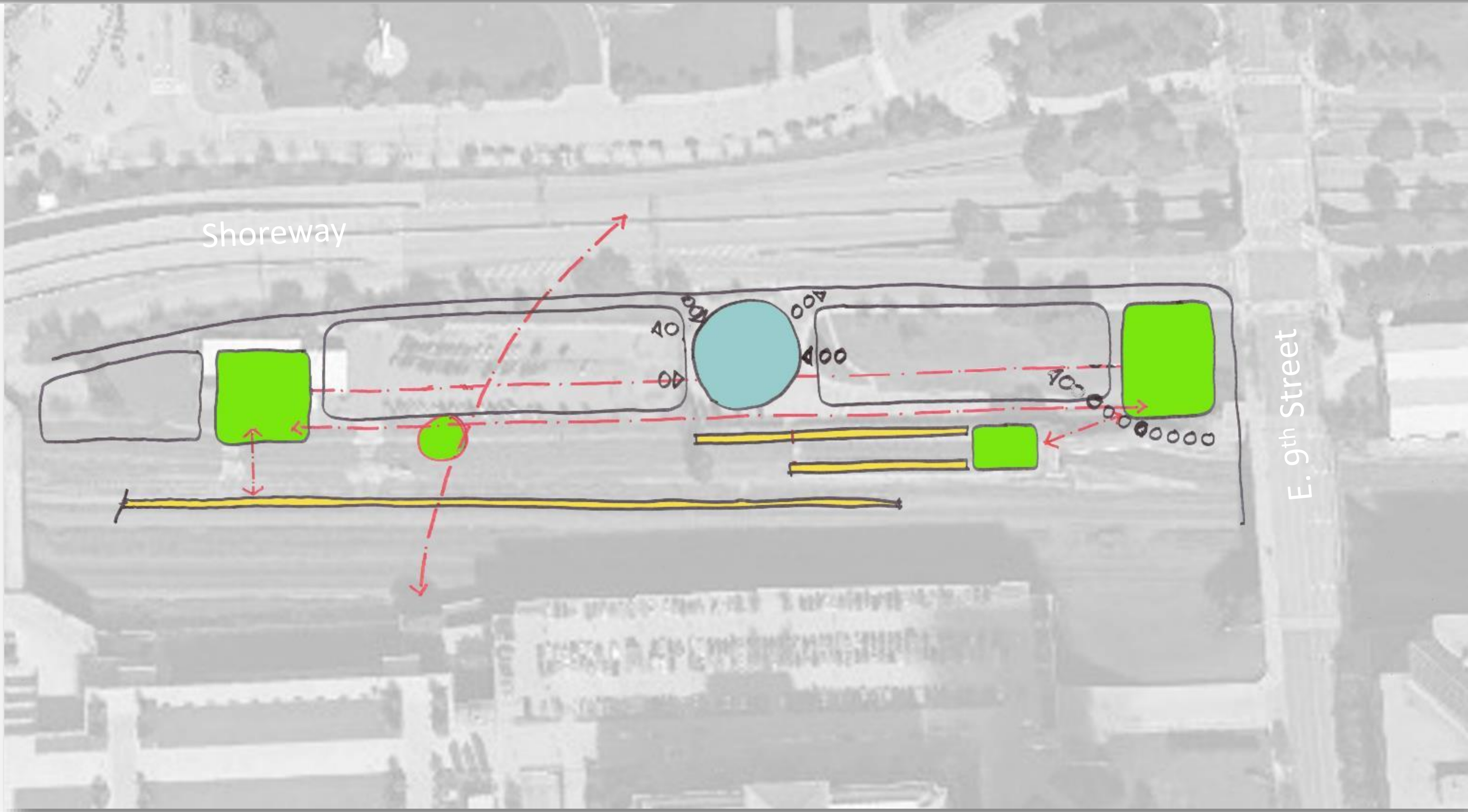


# Concept Development | Site Diagram





# Concept Development | Site Diagram





# Concept Development | Bridge Connectivity



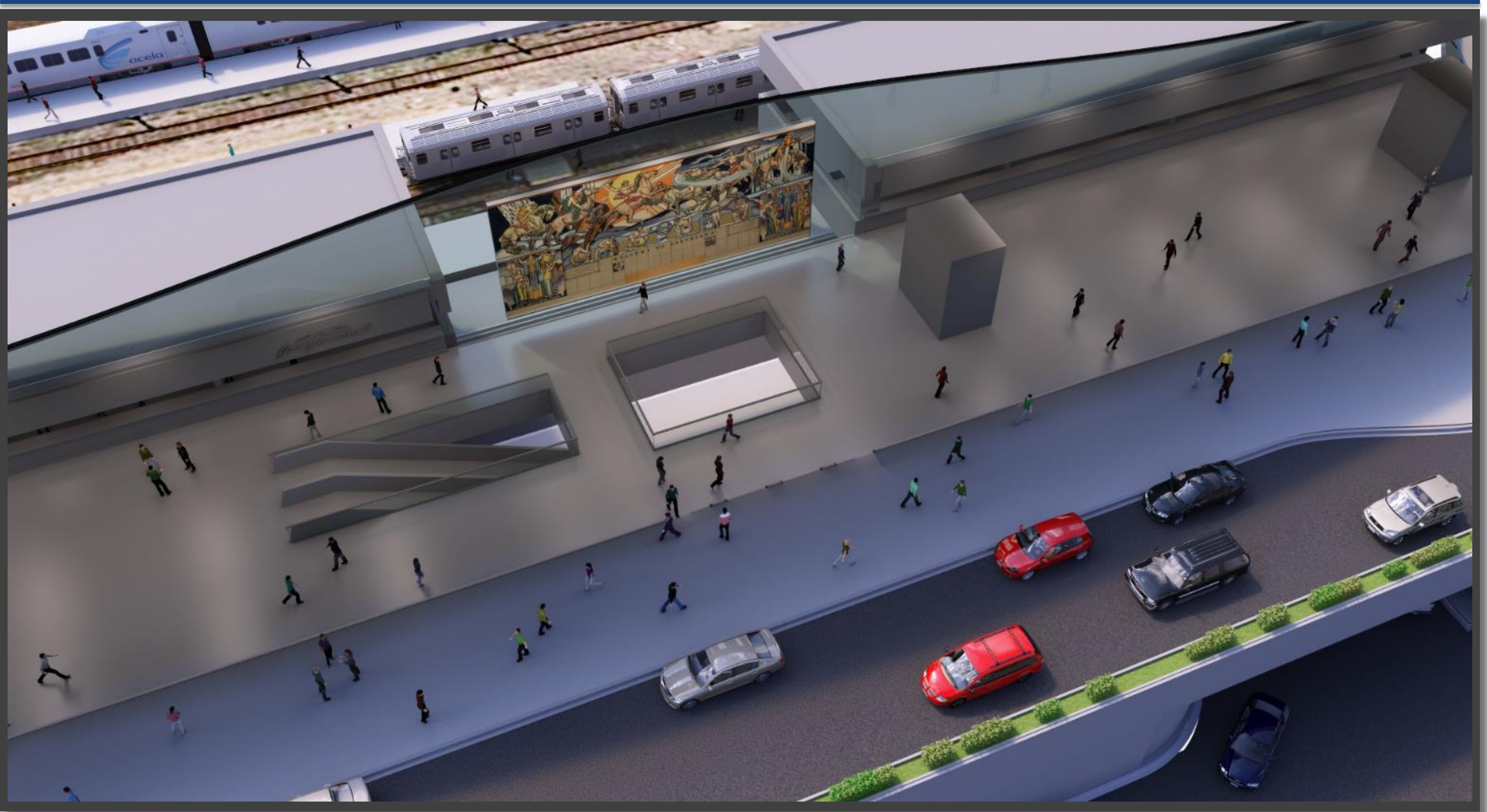


# Concept Development | Multi-Level Access





# Concept Development | Mixed-Use Opportunity





# Concept Development | Bridge Connectivity



Shoreway off ramp to E. 9th St

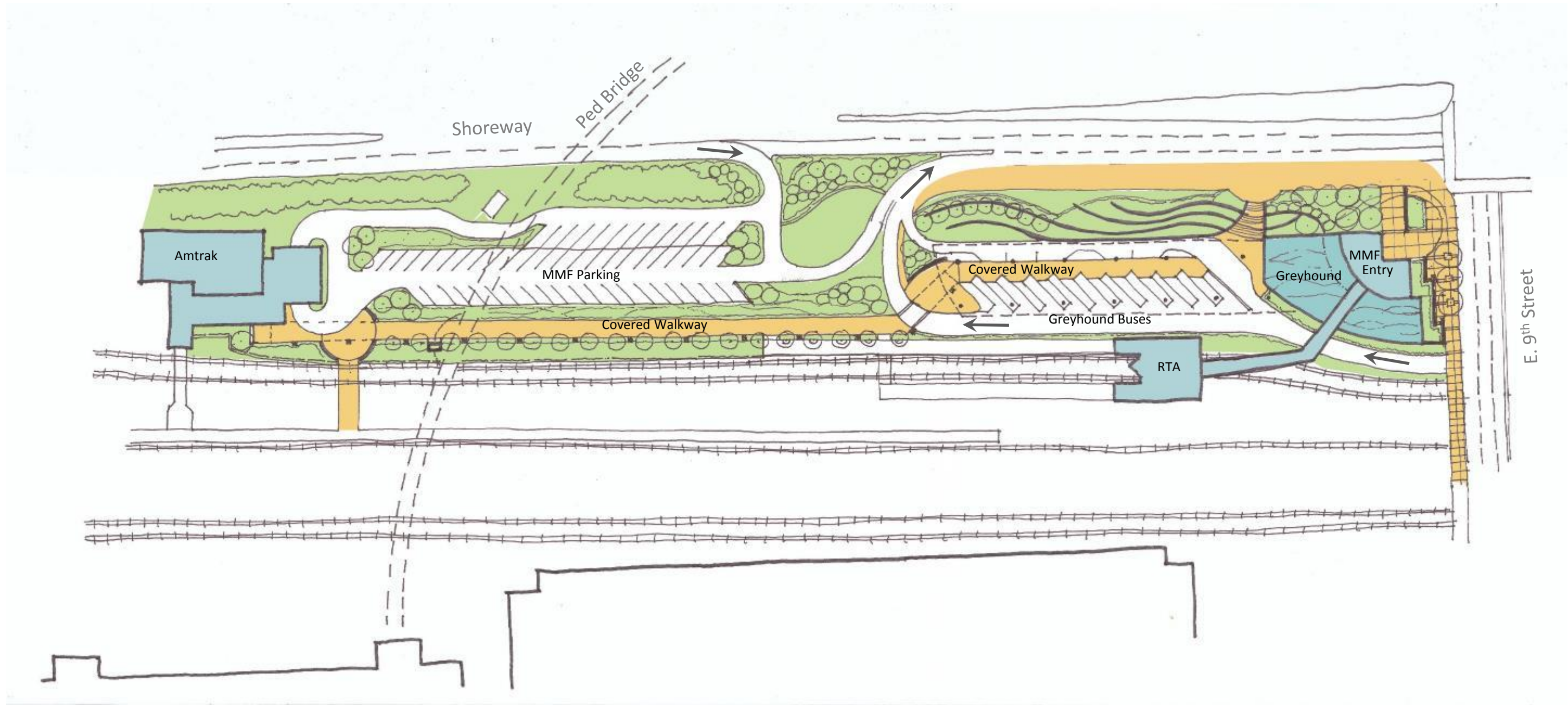


# Concept Development | Bridge Connectivity



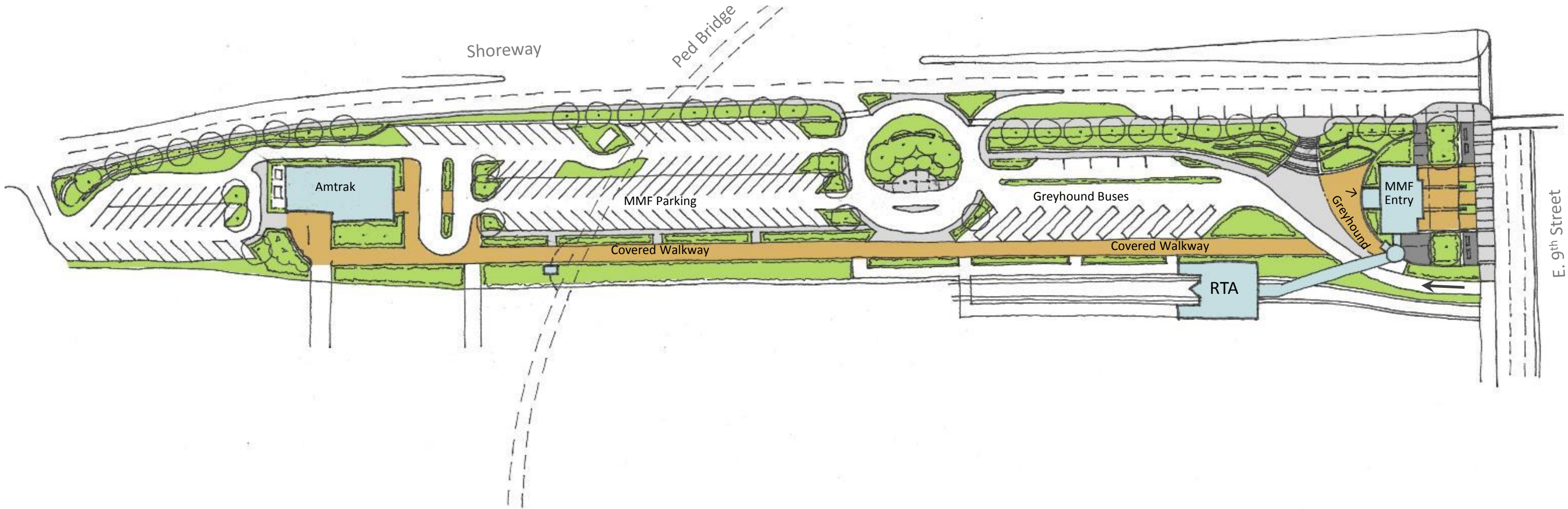


# Site Concepts | Offset alignment



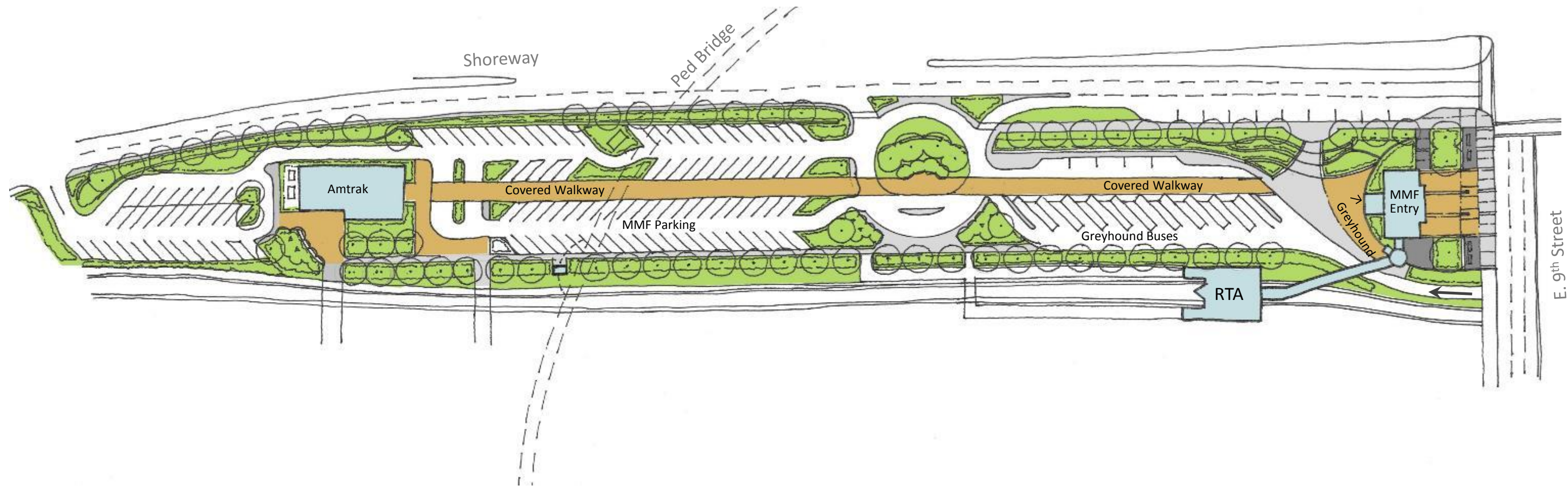


# Site Concepts | Track alignment





# Site Concepts | Center Alignment



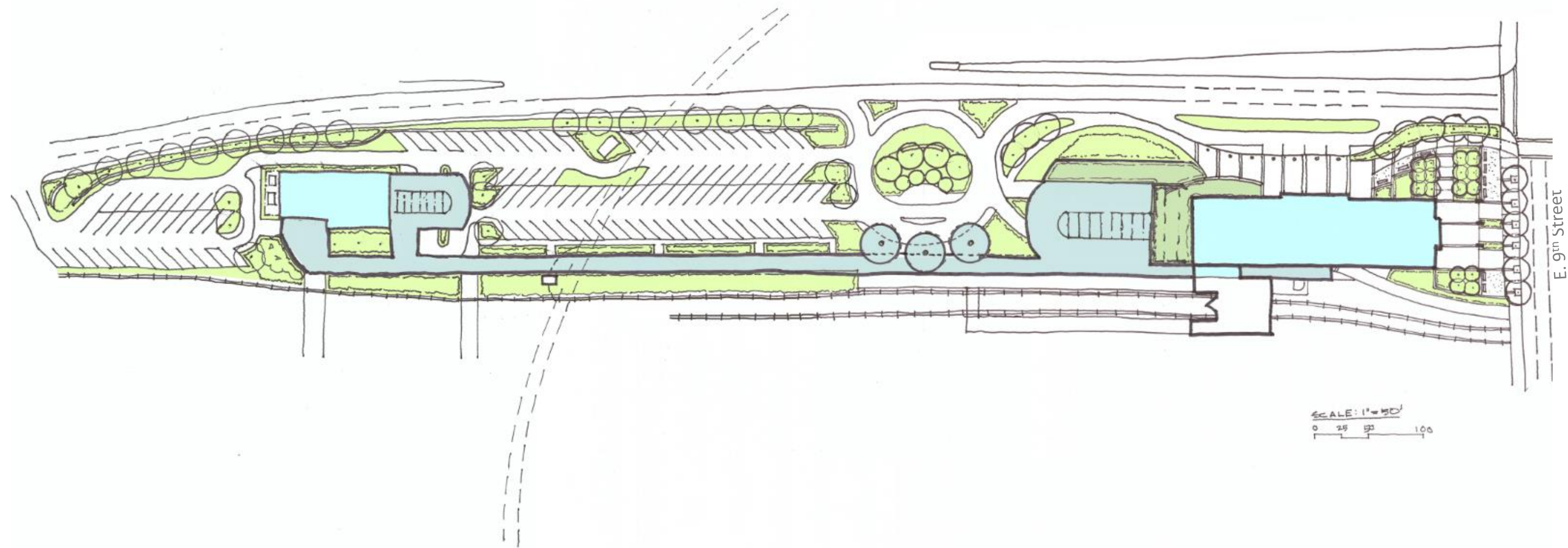


# Site Concept | Track Alignment



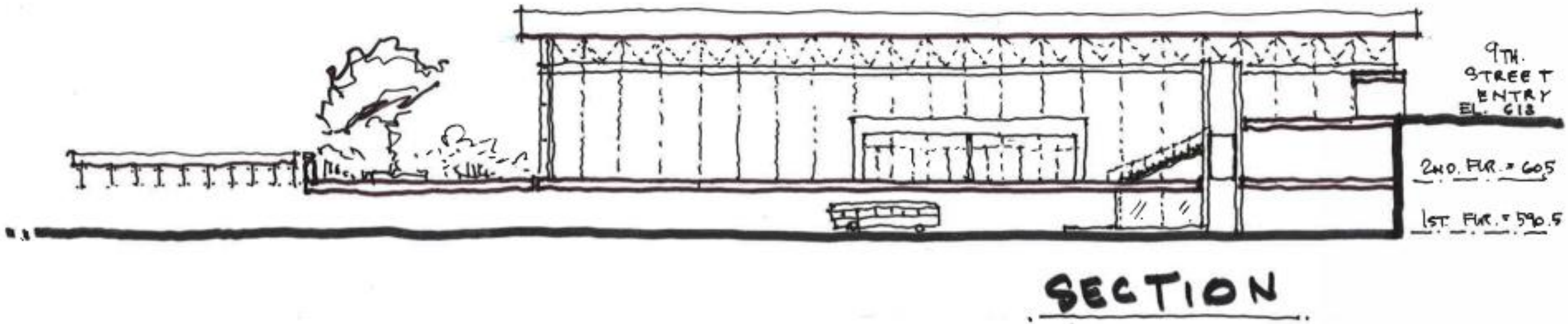
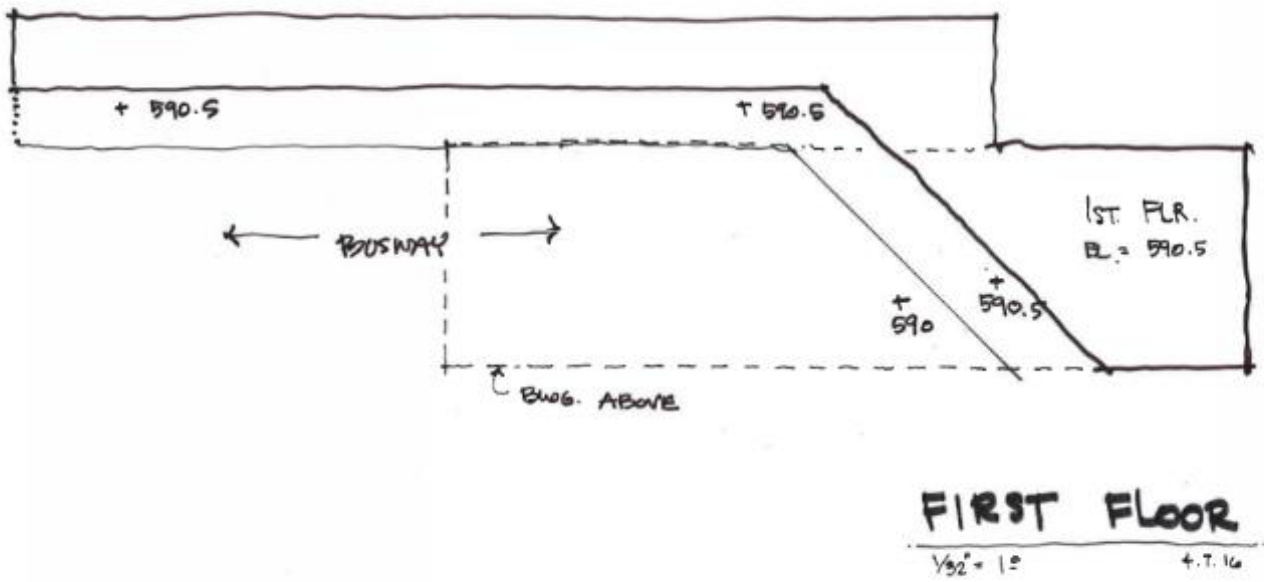
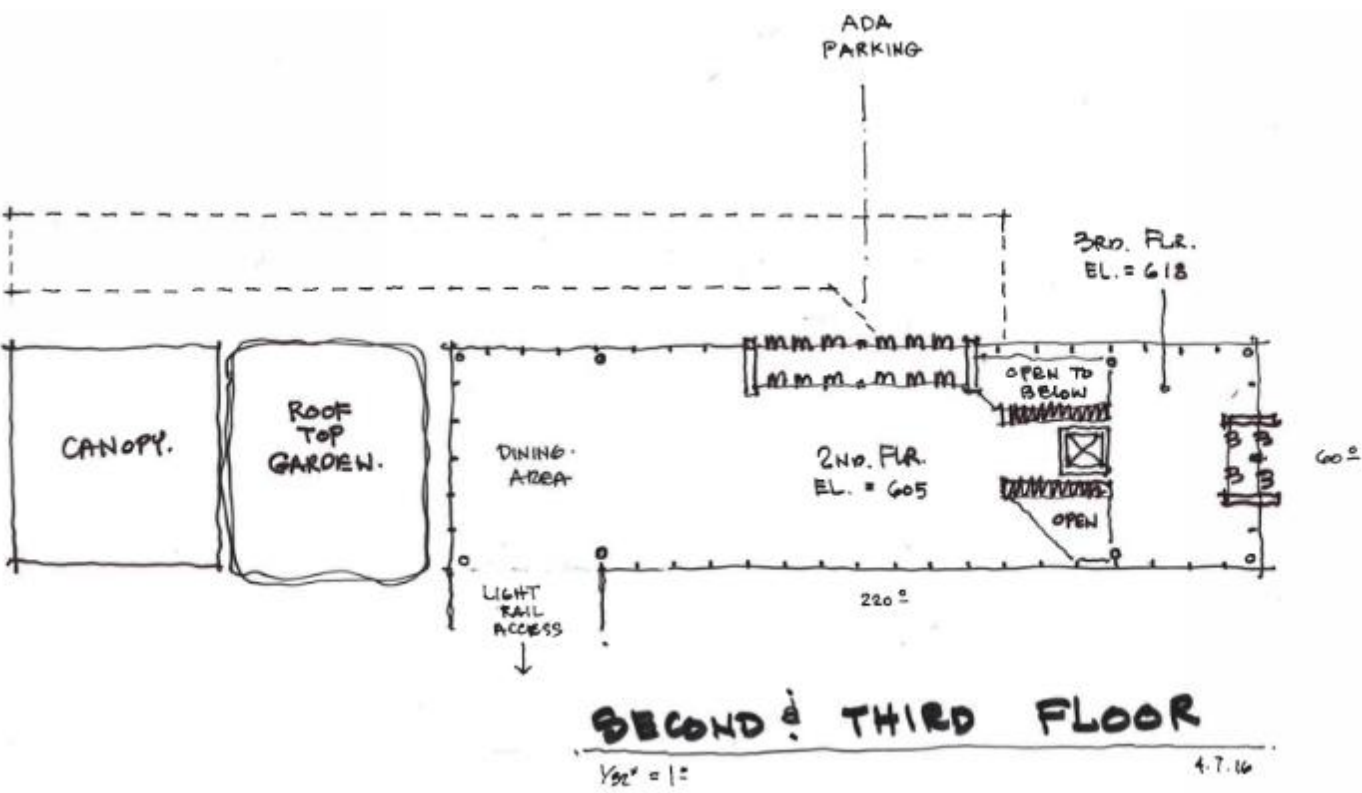


# Cleveland Multimodal | Site Design





# Cleveland Multimodal | Building Design (Greyhound/RTA)





# Cleveland Multimodal | Site Design





# Cleveland Multimodal | Ninth Street Plaza



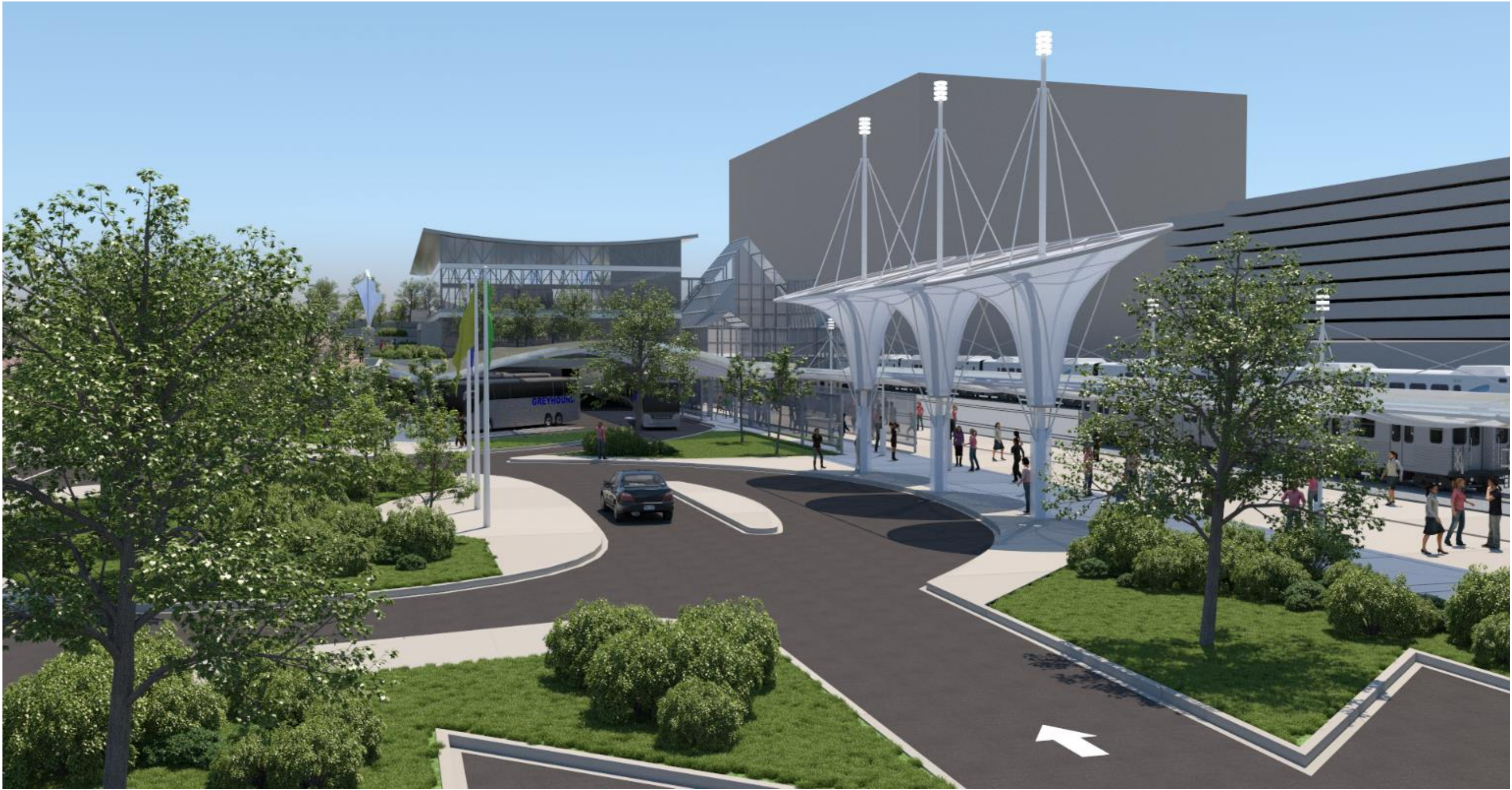


# Cleveland Multimodal | Passenger Plaza





# Cleveland Multimodal | Vehicular Circulation



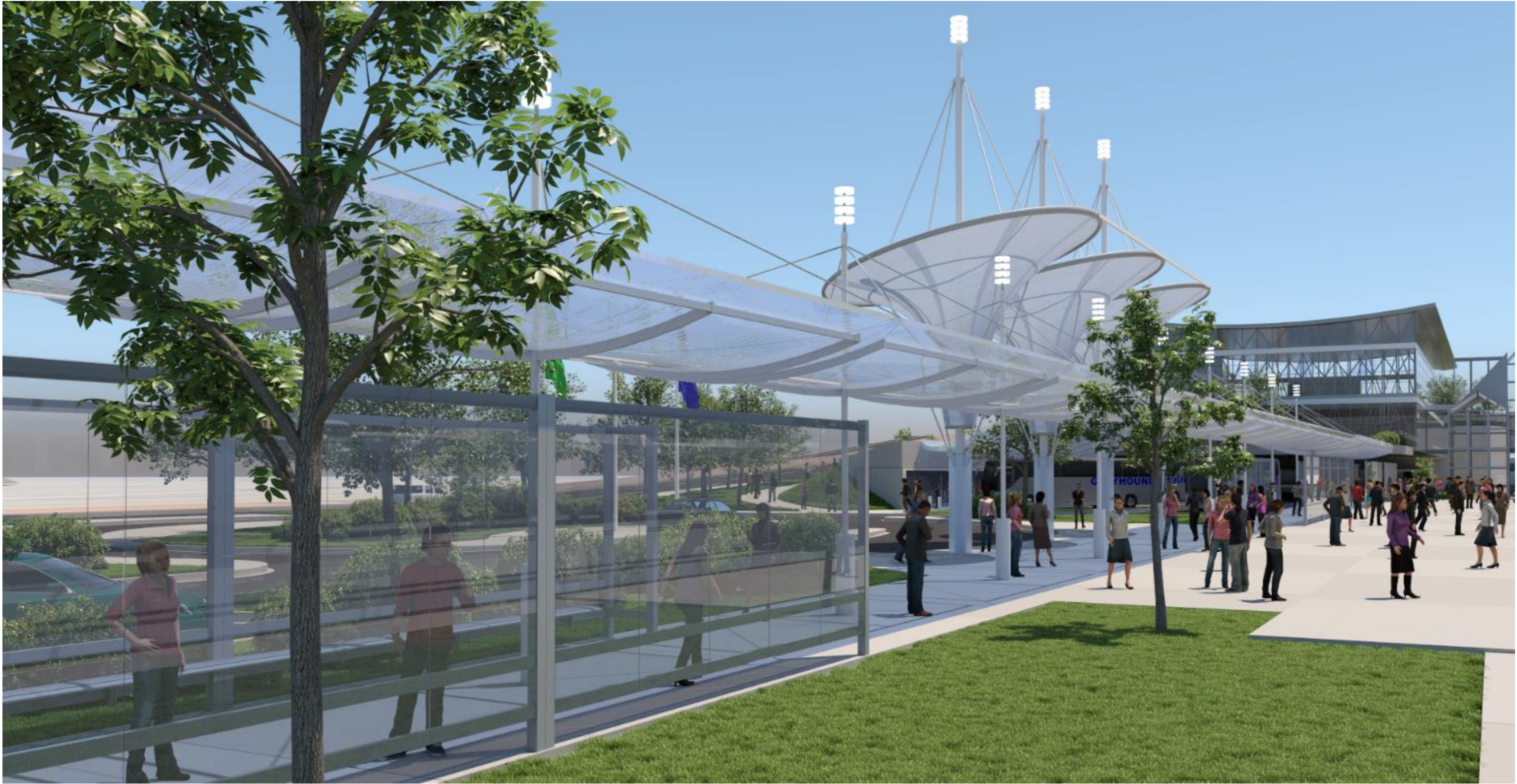


# Cleveland Multimodal | Pedestrian Promenade





# Cleveland Multimodal | Pedestrian Promenade





# Cleveland Multimodal | Project Cost Estimate



- Total Project Cost:
  - \$44.3 million
  - \$48.1 million  
(in 2019 dollars)
- Includes final design and construction.





# Cleveland Multimodal | Next Steps



- Acquire Funding
  - Project Sponsors
  - Federal
- Build support
  - Stakeholders
  - City
  - State
  - Federal





# Thank You | Questions?

